

# SECTION 4 CHARTS AND DIAGRAMS

## 4.1 BOARD INTERCONNECTIONS

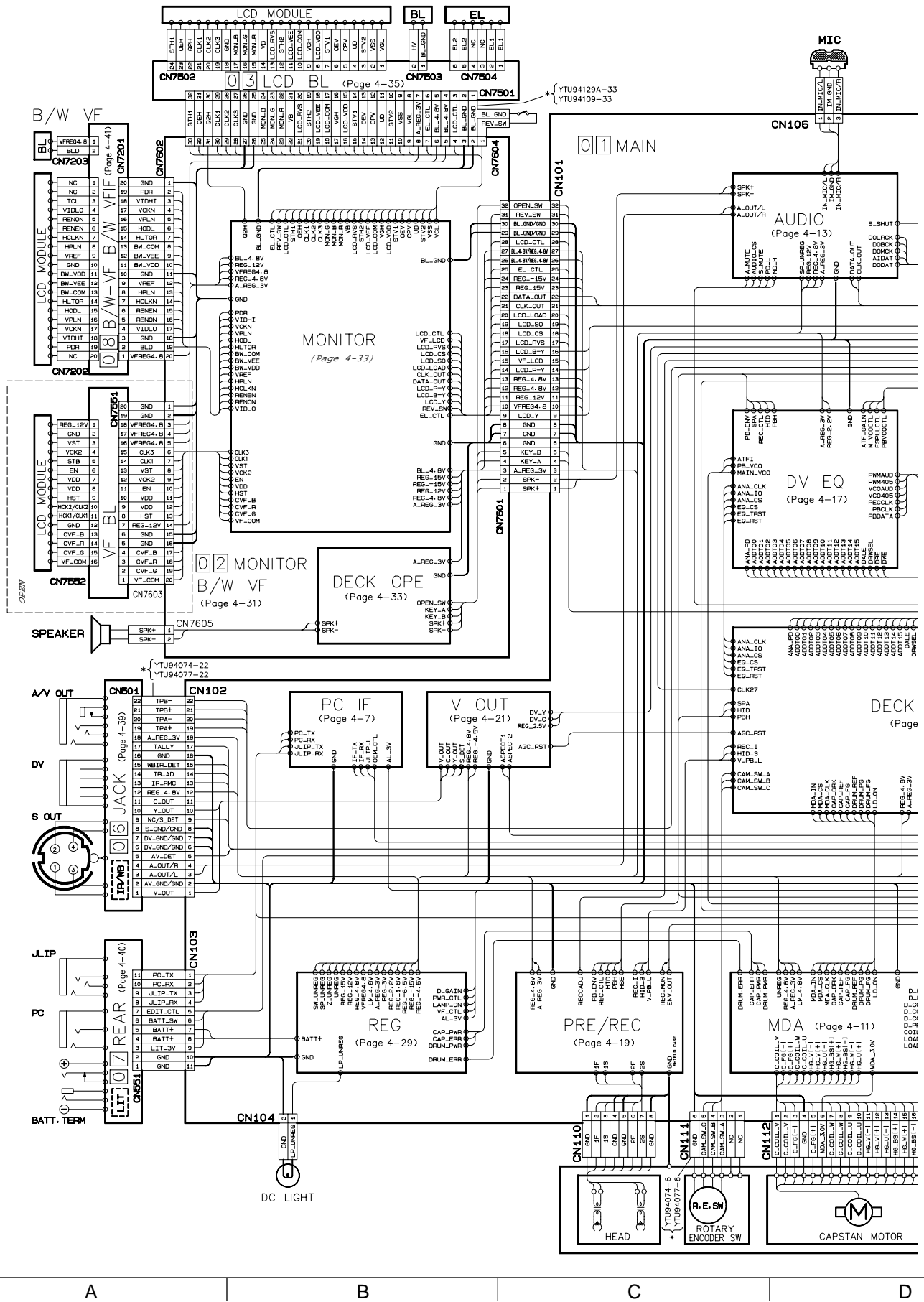
5

4

3

2

1



A

B

C

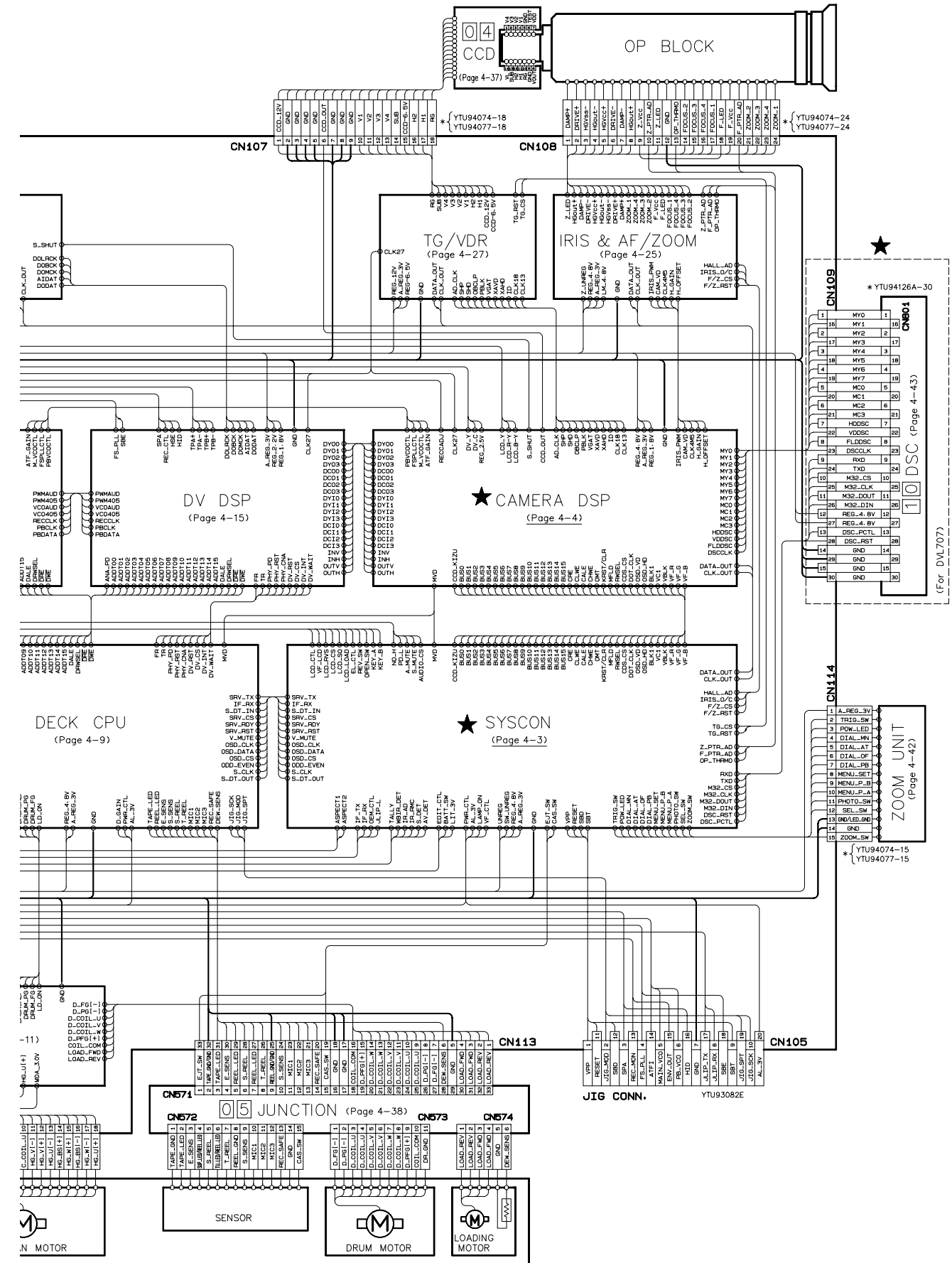
D

**Note 1: How to find the page showing the continuative schematic diagram**

**Example) TO AUDIO (Page 4-13): Refer to the GR-DVL200EG service manual (No. 86558)**

**TO SYSCON (Page 4-3): Refer to this service manual**

**2: The mark ★ means modified points.**



E F G H

## 4.2 SYSCON SCHEMATIC DIAGRAM

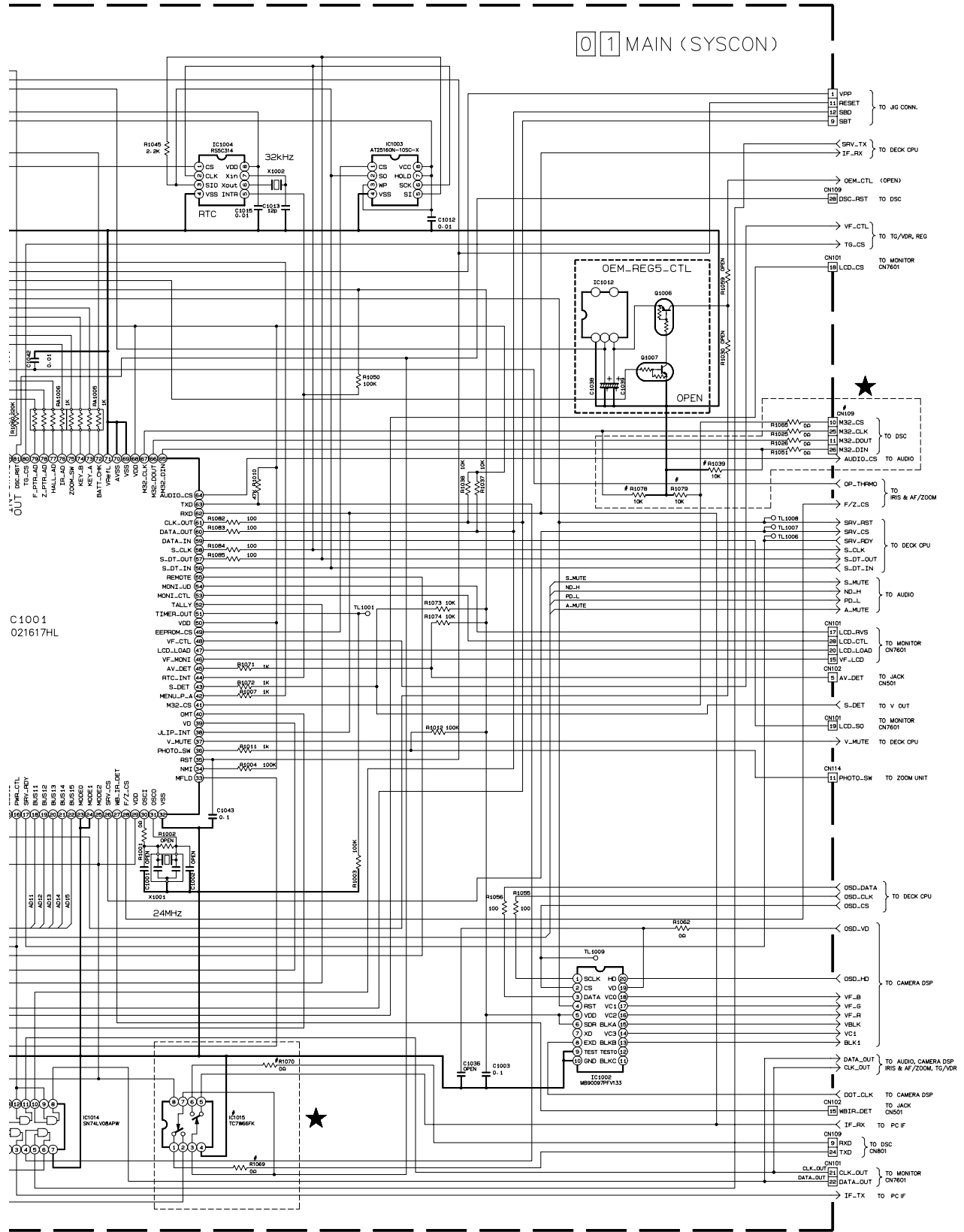
5

4

3

2

1



NOTE : COMPARISION CHART OF MODELS & MARKS (#).

REF. NO	IC1015	R1039	R1069	R1078	CN109
MODELS	R1070	R1079	R1079	R1079	CN109
GR-DV400/600	OPEN	USED	OPEN	USED	OPEN
GR-DV407	USED	OPEN	USED	OPEN	USED

A

B

C

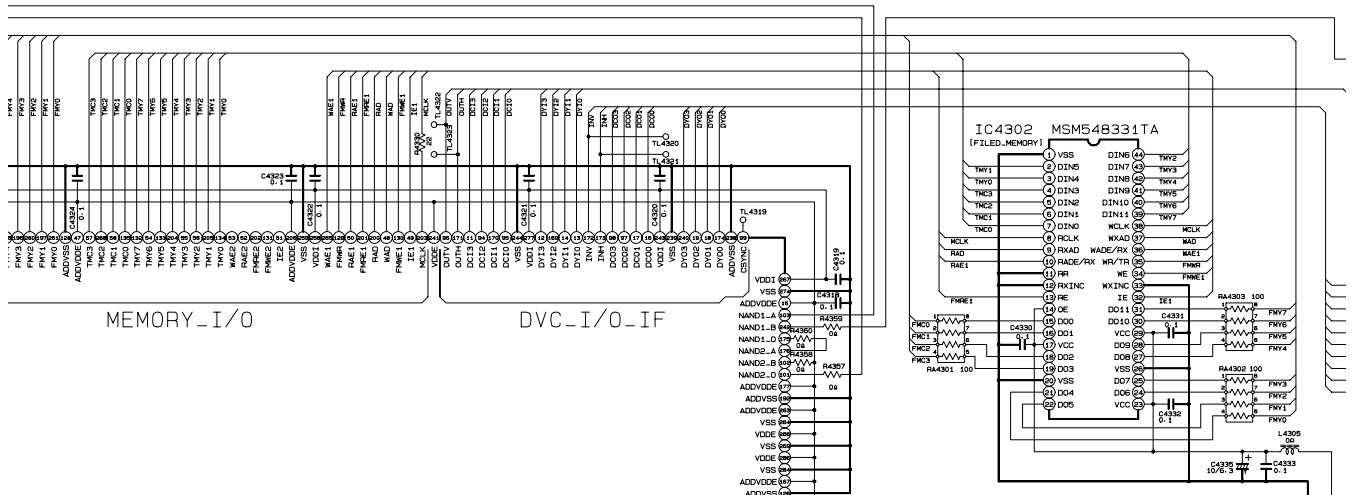
D

### 4.3 CAMERA DSP SCHEMATIC DIAGRAM

5

01 MAIN (CAMERA DSP)

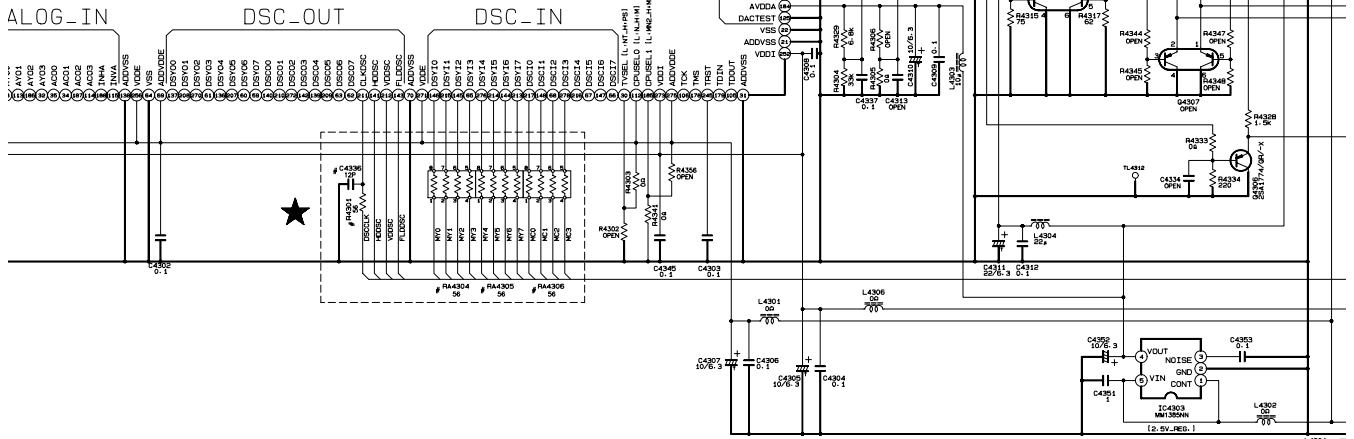
4



3

IC4301  
JCY0120  
[CAMERA\_DSP]  
YCA&IWD&DVIF&FMC&SSG&DAC&ENC &EVR

2



1

NOTE : COMPARISON CHART OF MODELS & MARKS (#).

REF. NO	RA4301	RA4304 RA4306	C4336
GR-DW400/600	OPEN	OPEN	OPEN
GR-DW707	USED	USED	USED

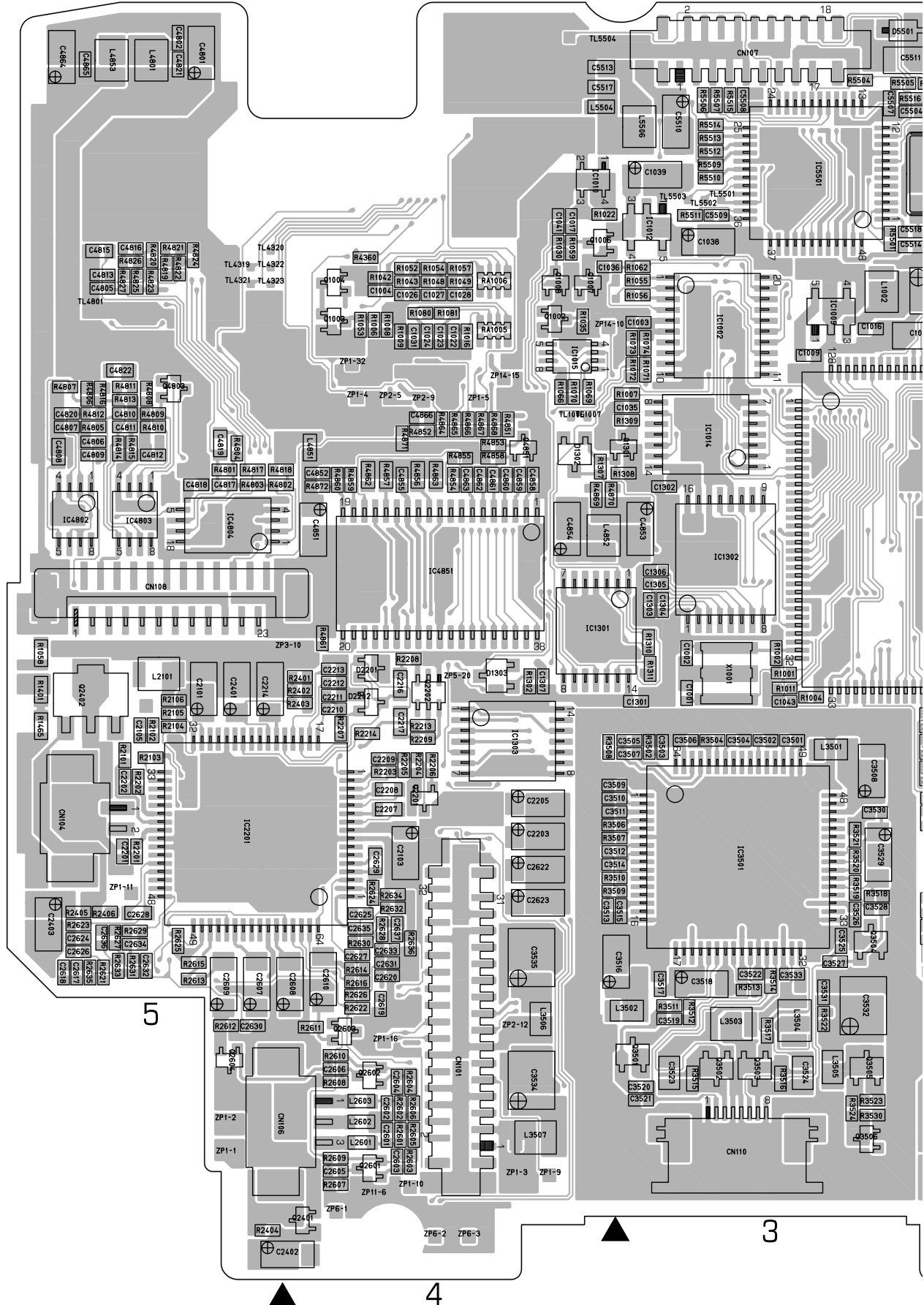
A

B

C

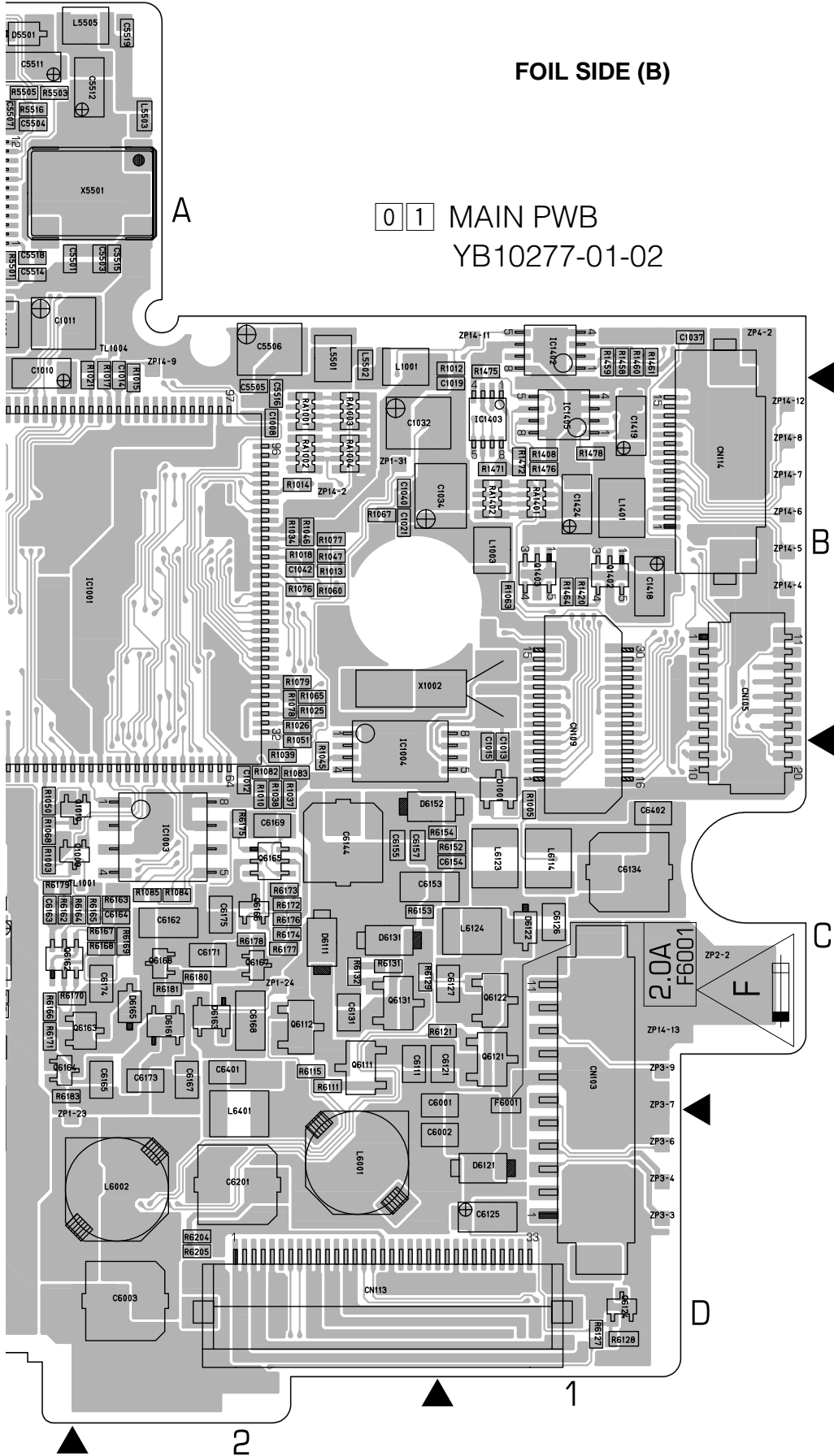
D

# 4.4 MAIN CIRCUIT BOARD



FOIL SIDE (B)

0 1 MAIN PWB  
YB10277-01-02









COMPONENT SIDE (A)

01 MAIN PWB  
YB10277-01-02

